



**RS STEEL**

THINK PEB SHED, THINK RS STEEL

AN ISO 9001 : 2015 CERTIFIED COMPANY



Distance is not a big factor in **A RELATIONSHIP**.  
Communication is. But most of all, **COMMITMENT** is the **biggest**



Manufacturer & Supplier of :

All Kinds of PEB Engineering Buildings, Prefabricated Structure,  
Industrial Shed, Warehouse Shed, Factory Shed Etc.

[www.rssteelfab.com](http://www.rssteelfab.com)

## ABOUT US

We “RS Steel” are a leading manufacturer, supplier, exporters, distributor, wholesaler & trader of Premium quality PEB Buildings, Industrial shed, Prefabricated Structure, Cold Storage Plant Warehouse Shed etc. Incepted in the year 2004. We “RS Steel”, An ISO 9001 : 2015 Certified company. Situated at Sec. 63, Noida (Uttar Pradesh, India). Moreover, within us short period of time, we have established a commendable position & good will in this competitive market. we have been able to finish emerging requests and demands of our customers. Additionally we are also providing installation services for the offered array of product.



## Vision



For PEB Building to be recognized as the bench mark in the steel buildings industry, this will be accomplished through product perfection, engineering Excellence and the Best customer services in the industry.

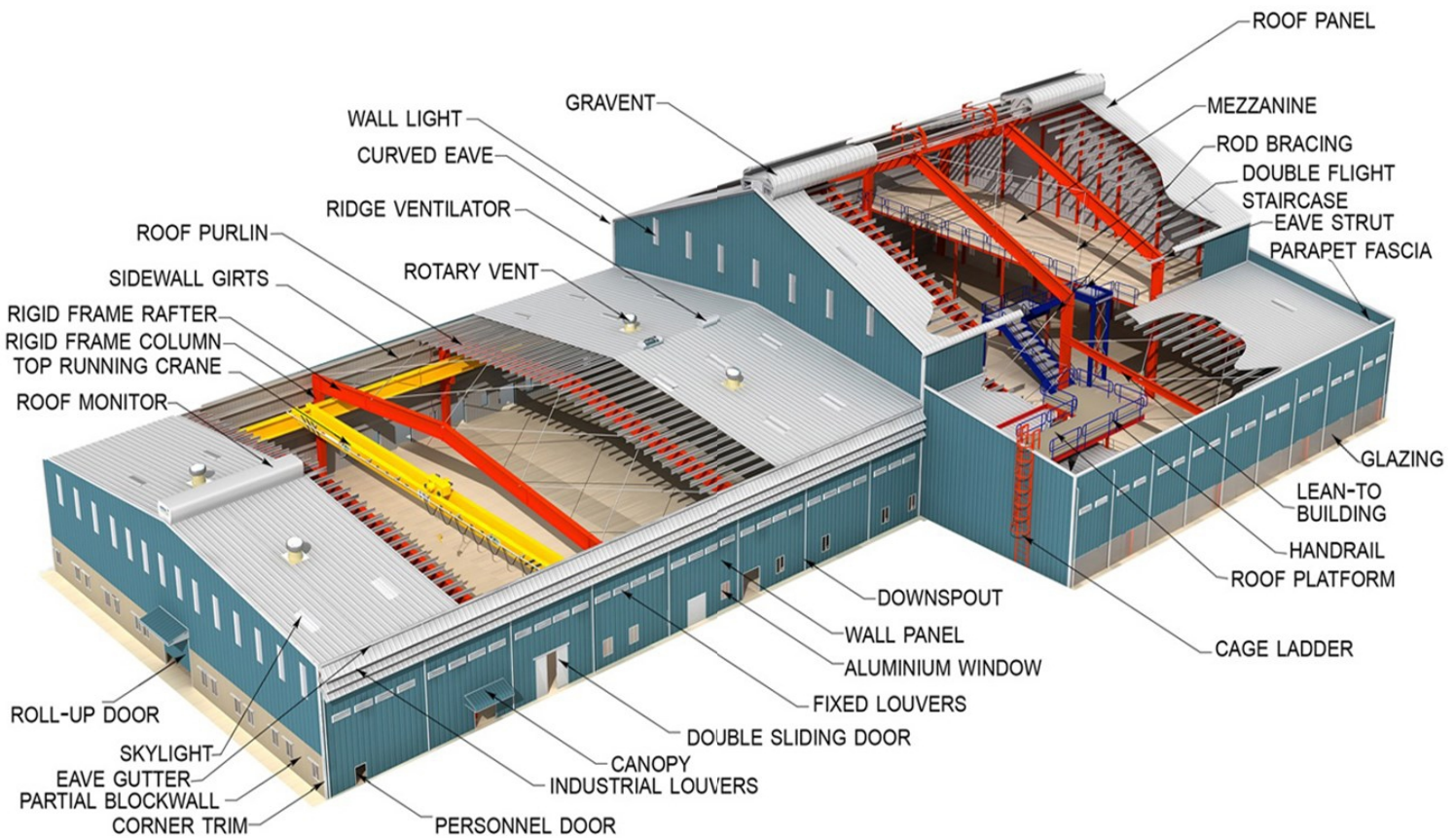
- To bring the PEB technology to where it is most needed in the world and help others “build a better life” through industrialization.
- To (jointly) build high capacity, efficient & cost effective steel factories for speedy delivery and for benefiting from “large economies of scale”.
- To design and fabricate safety and technologically advanced buildings.
- To offer customers versatility in design & fabrication to meet their exact building requirements.
- To offer customer services that are second to none in



- Be a leader and not a follower.
- Share knowledge and success with others.
- Forge local alliances wherever you go.
- Apply only the latest design and buildings codes.
- Continually improve your products.
- Customer service makes all the difference; customers are lifetime partners; always seek a win – win solution.
- The longest journey begins with the smallest step so begin with the end in mind and focus on the long term instead of short term.



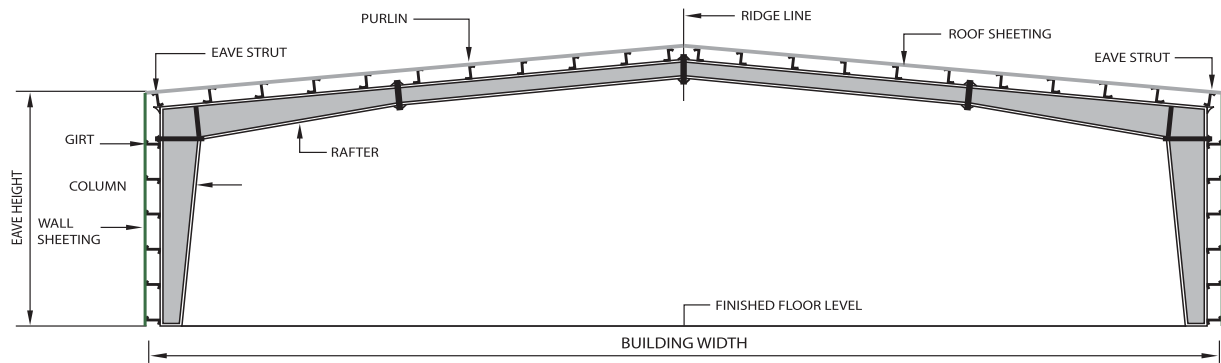
# Pre Engineering Building



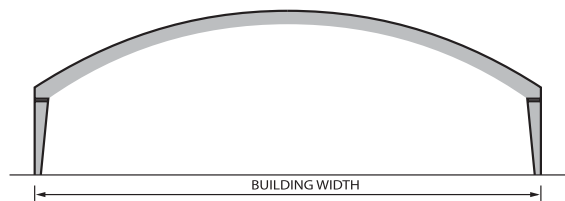
## Pre-Engineered Building Detail

- **Primary Structural Members:-** Main Frame - Columns | End-wall Posts | Rafters (i) Solid Web (ii) Open Web | Other Main Support Members
- **Secondary Structural Members:-** Purlins & Girts | Eave Strut | Cable | Angle | Pipe | Builtup | Rod Bracing | Wide Bay Truss Purlins (Cold Formed / HR)
- **Roofing / Claddings:-** Pre-painted Galvalume (Alu-Zinc) Sheetting is a multilayer coated profile with environment specific paint coating and is available with or without insulation. PPGL panels are offered with wide range of coatings namely SMP, SDP, PVDF; commensurate with project location.
- **INTERLOCK (Standing Seam Roof - SSR):-** Leak-Proof | Zero Maintenance | Interlocking Panels | 3600 Mechanical Seam | 76 mm Deep Crest | Full Seamed Roof | Movable Clip | Factory Made SSR
- **Accessories:-** Fasteners | TUF - Dome Lite | Sliding Doors | Mastic Tape | Walk-way Doors | Insulation | Glazing Windows | Roof Curb | Fixed Ventilators | Roof Jack | Turbo Vents | Roll-up Doors | Ridge Vent Sealants.
- **Erection and Installation:-** From selection of appropriate structures to economic designs, we monitor and supervise the entire project till completion.
- **Industry Applications:-** Airports | Automobiles | Commercial Buildings | Engineering & Manufacturing | Food Processing | Infrastructure | Pharmaceuticals | Power | Retail | Textile | Warehousing & Logistics

## STANDARD FRAMING SYSTEMS

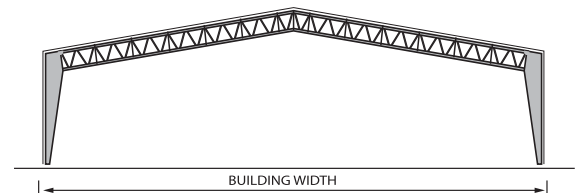


## TYPICAL CROSS SECTION



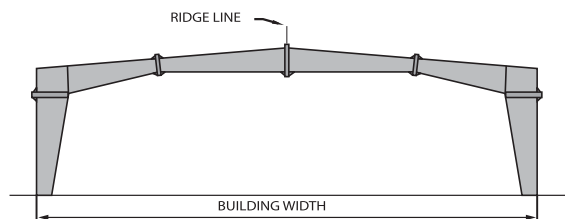
MAX. PRACTICAL WIDTH = 100 m

### Built-up Curved Rafter (BU)



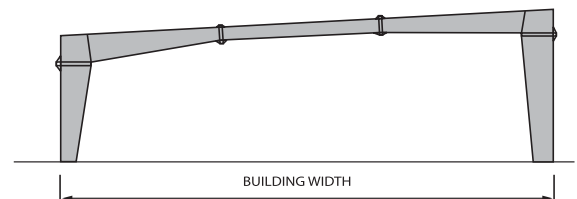
MAX. PRACTICAL WIDTH = 80 m

### PebHybrid (PH)



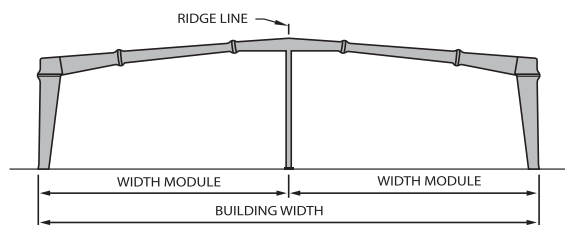
MAX. PRACTICAL WIDTH = 180 m

Clear Span (CS)



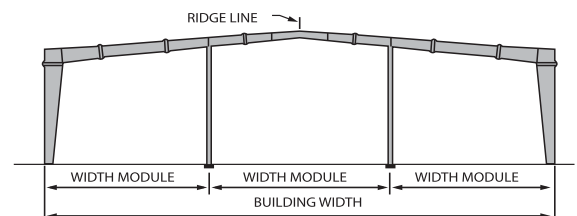
MAX. PRACTICAL WIDTH = 60 m

## Single Slope (SS)



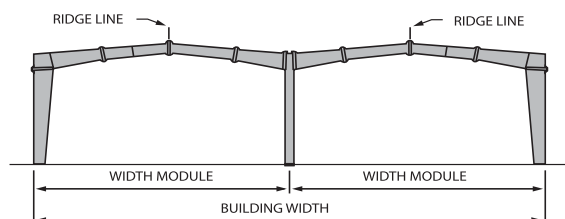
MAX. PRACTICAL WIDTH = 150 m

### Multi-Span "1" (MS-1)



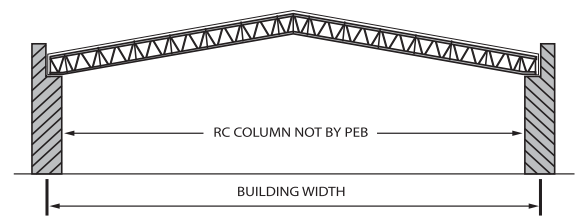
MAX. PRACTICAL WIDTH = 200 m

### Multi-Span "2" (MS-2)



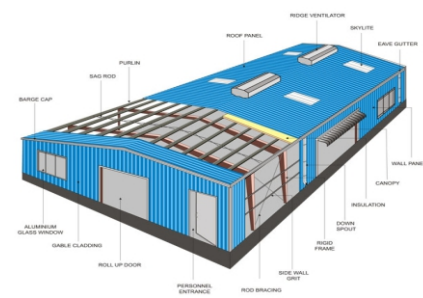
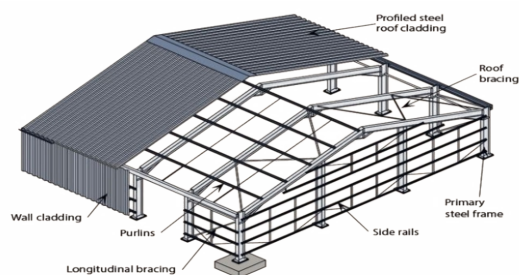
MAX. PRACTICAL WIDTH = 360 m

### Multi-Gable (MG)



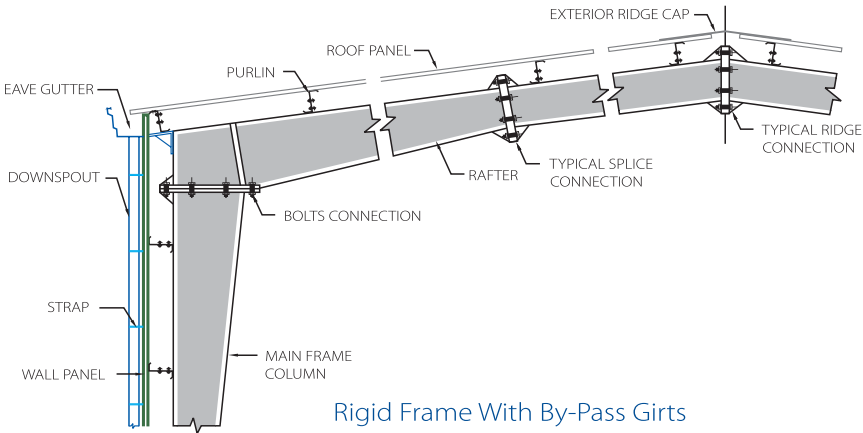
MAX. PRACTICAL WIDTH = 65 m

### Roof System (RS)

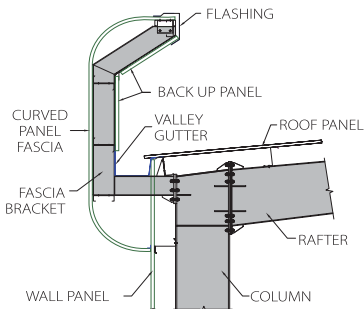




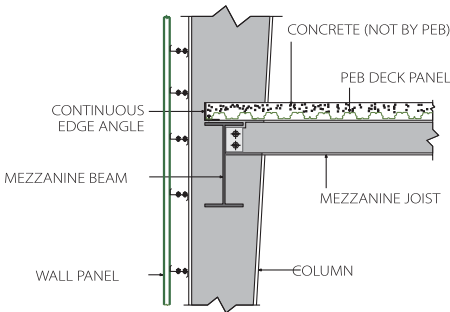
# STANDARD STRUCTURAL DETAILS



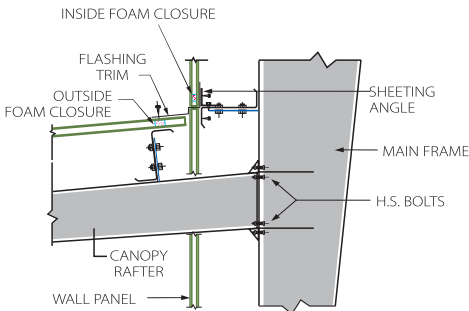
Rigid Frame With By-Pass Girts



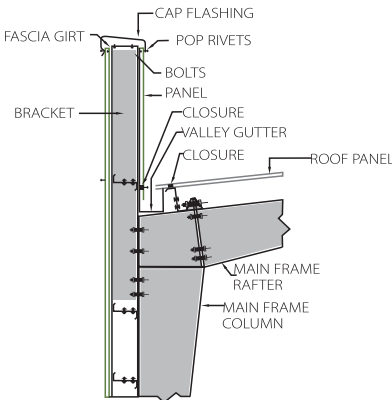
Curved Fascia



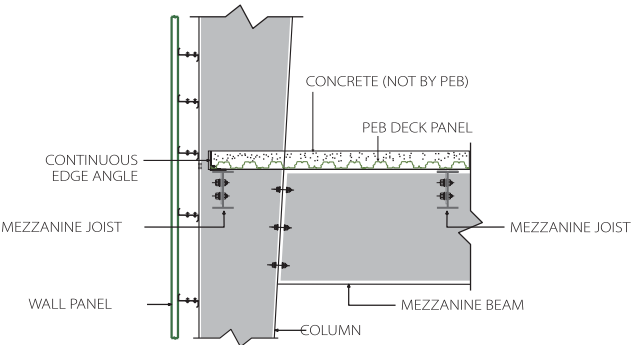
Mezzanine Joist Connection to Mezzanine Beam



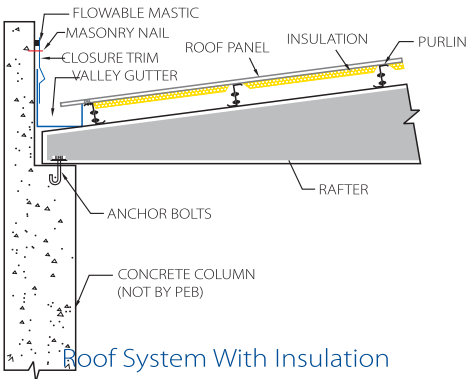
Canopy



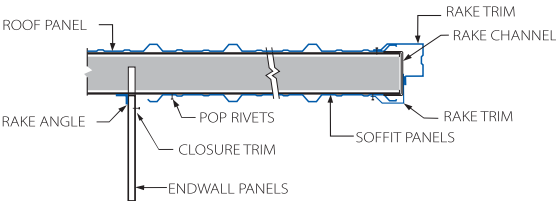
Parapet Fascia



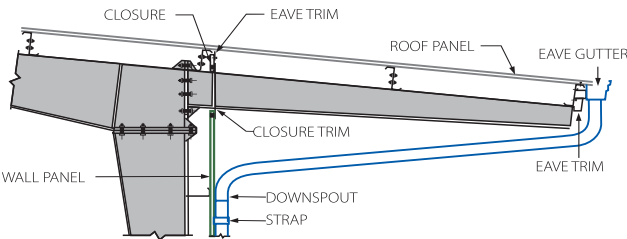
Mezzanine Beam Connection to Main Frame Column



Roof System With Insulation

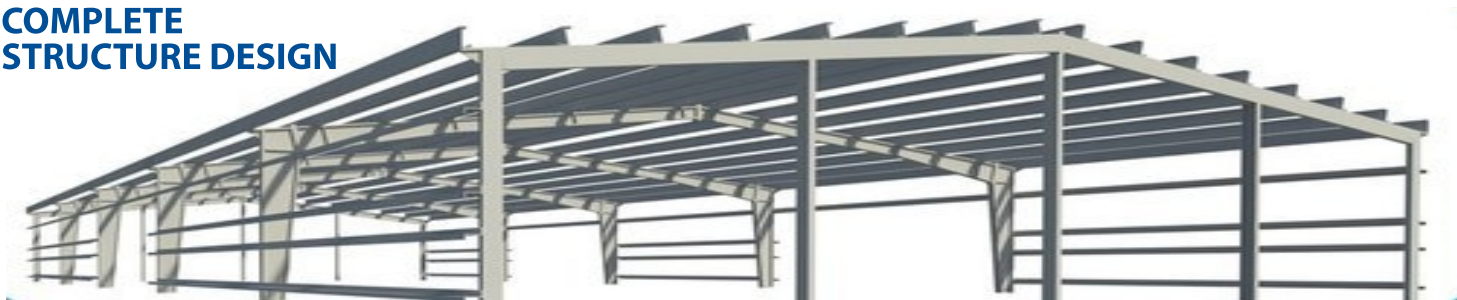


Endwall Roof Extension With Sot



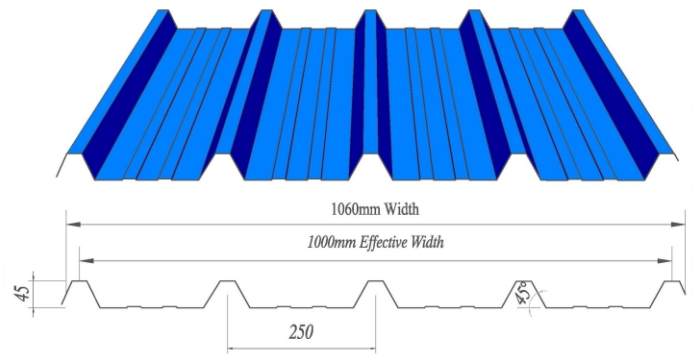
Sidewall Roof Extension

## COMPLETE STRUCTURE DESIGN



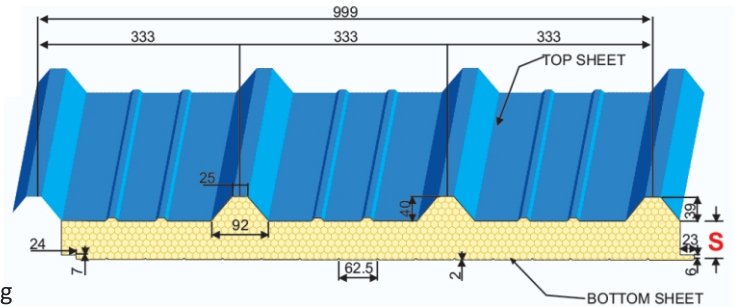
## ROOF & WALL CLADDING

These roof panels have 28mm ribs on 200mm centers for an even-shadowed appearance. They offer 1000mm width coverage and are reinforced between the ribs for added strength. Panel is available in 26 gauge steel as standard. Panels are fixed by means of self-drilling fasteners.



## SANDWICH PUF ROOF / WALL PANELS

"World's Best Manufacturing Process with continuous Production line for Sandwich PUF/PIR Panels." Metal-faced polyurethane sandwich panels are the system of choice of today for large industrial buildings refrigerated warehouses, office blocks exhibition halls, fair pavilions, schools and sports halls. The aluminium or steel facings themselves are surface coated and can be manufactured with profiles of various depths leading to a higher load bearing. Polyurethane sandwich panels come complete with specially formed tongue-and-groove joints ensuring a perfect fit and maximum integrity. Assembly is fast, easy and cost effective.



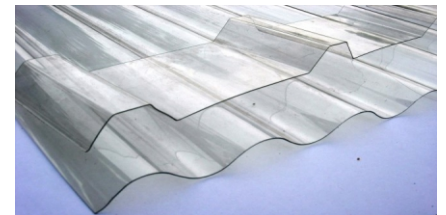
## C & Z Purlins

R S Steel Purlins is a structural component, C&Z Purlins are processed Cold roll-formed from high Tensile steel coil to use as support for framed structures. They are designed to use as secondary support for roofing and cladding application. They are light weight, high tensile, efficient and economical requiring minimum maintenance and will last for longer period. It is available in customized length & it saves more than 30% of the steel by weight.



## SKY LIGHT PANLE

For additional indirect lighting needs, translucent Skylight reinforced panels created in the same configuration as metal wall or roof panels, provide an optimal solution.



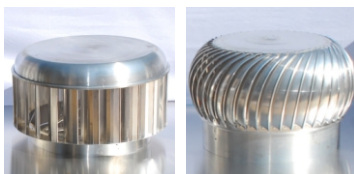
## Wall Louvers

Wall Louvers provide excellent ventilation in vertical positions and are self-mulling and self-flashing, requiring no additional flashing to complete installation.



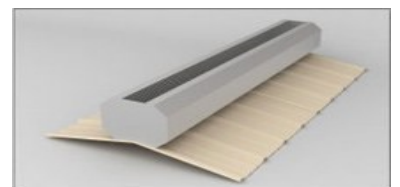
## Gravity Ventilators

Designed for economical, low volume air movement to ventilate warehouses, light industrial buildings, attics, lofts, and other buildings, Gravity Ventilators create a free, unobstructed flow of ventilation air.



## Ridge Vents

To control the movement of fresh air through a building while removing hot, stale and contaminated interior air, stationary, gravity-flow Single or Continuous Ridge Vent systems can properly and effectively control air movement.







**PREFABRICATED STRUCTURE**



**PEB ENGINEERING BUILDING**



**PRE ENGINEERING STRUCTURE**



**PEB FACTORY BUILDING**



**INDUSTRIAL SHED**

**AUDITORIUM STRUCTURE**

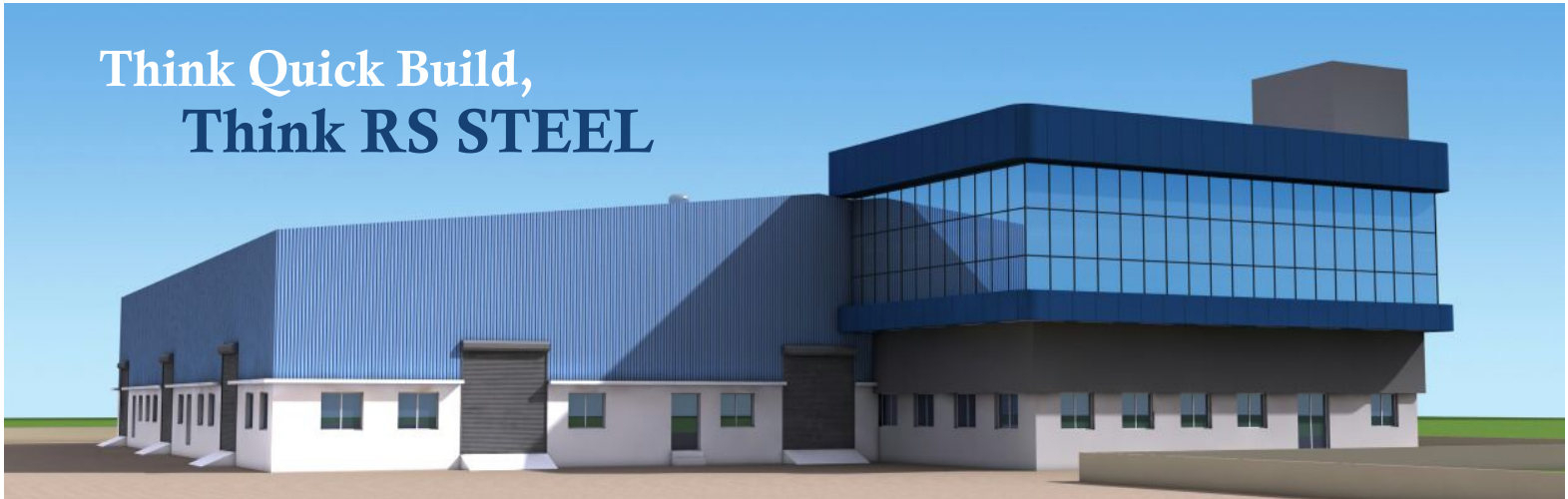




**THINK SHED,  
THINK RS STEEL**



**Think Quick Build,  
Think RS STEEL**



## **RS STEEL INDIA**

Head Off. (Factory): F-359, Sector 63 , Noida - 201301, (U.P) India

Factory : G-50, Phase-I, Industrial Area, M.G. Road, Masuri, Ghaziabad-201015 (U.P) India

Phone : +91-9891444646, 7065444646

E-mail : [info@rssteelfab.com](mailto:info@rssteelfab.com) | Web.: [www.rssteelfab.com](http://www.rssteelfab.com)

**AN ISO 9001 : 2015 CERTIFIED COMPANY**