

MAK STEEL INDUSTRY

(MAK Group of Company)

A Pre-engineered Building Manufacture

✉ info@makbuildings.com

🌐 www.makbuildings.com

INDEX

Who We Are	3
MAK Steel Building	4
Vision	5
Organization Chart	6
Commitment	7
Code of Manufacturing	8
Pre Engineering Building Specification	9
Pre Engineering Building Details	9
Standard Framing System	10
Standard Structural Details	11-14
Structural Design & Engineering	15
Safety	16
MAK In House Machines	17-18
Machineries And Equipments	19
We not only construct, We Design It.	20
Pre Engineering Buildings	21
MAK Projects	22-31
Our Valued Customers	34
There's A Reason Why?	35

WELCOME TO MAK STEEL INDUSTRY

Established in 2020 in Dubai UAE, MAK Group of company is the Middle Eastern arm of the renowned Indian steel conglomerate, MAK Group of companies with a legacy of 15 years in the Indian market, we have earned the trust of our customers through our unwavering commitment to quality, reliability, and customer satisfaction

OUR JOURNEY

Our story start in Dubai 2020 after the COVID, But it was began in India 2010 where we established ourselves as a trusted name in the steel industry. Over the years, we have grown exponentially, expanding our product offerings, investing in cutting-edge technology, and fostering a culture of innovation and excellence. Today, we are proud to have extended our presence to the UAE , Middle East and African regions, with our head office strategically located

OUR INFRASTRUCTURE

Our Office in Dubai and factory in Umm Al Quwain UAE is equipped with the latest technology and machinery, enabling us to manufacture a wide range of steel products. Our facility is designed to meet the highest standards of quality, safety, and efficiency, ensuring that our customers receive only the best products.

OUR MISSION

Our mission is to leverage our expertise, experience, and resources to deliver exceptional steel solutions to our customers in the Middle East and African markets. We strive to build long-lasting relationships with our clients, suppliers, and partners, based on mutual trust, respect, and open communication.

OUR VALUES

Quality: We ensure that our products meet the highest standards of quality, reliability, and performance.-

Customer Focus: We prioritize our customers' needs, providing personalized solutions and exceptional service.-

Innovation: We encourage creativity, innovation, and continuous improvement in all aspects of our business.-

Teamwork: We foster a collaborative and inclusive work environment, where our team members feel valued, empowered, and motivated.

Sustainability: We strive to minimize our environmental footprint, promoting eco-friendly practices and responsible business operations. suppliers, and partners, based on mutual trust, respect, and open communication.

Why Choose Us?

- Our 15-year legacy of excellence in the Indian market
- Our extensive experience in the steel industry
- Our commitment to quality, reliability, and customer satisfaction
- Our expertise in delivering customized steel solutions
- Our strong network of suppliers and partners in the region

APPROVED BY:



MAK STEEL INDUSTRY

Metal buildings date back to the late 18th century when the British constructed frames of mills and agricultural structures from metal in an effort to find strong, durable, fire-resistant and non-combustible construction material. As the market started demanding customized buildings and what was once acceptable as prefabricated, now had to be pre-engineered in order to customize the structure to suit the customer's needs. PEB's are accurately engineered in a way that the structure as a whole works as a single unit. A pre-engineered steel building (PEB), is the most advanced metal building system available in the market.

Pre-Engineered Steel Buildings (PEB)

The main components of a PEB are built up at the plant according to the carefully engineered design according to the client's needs. There are 3 main components:

Primary built up members

- Columns: vertical members from the ground up
- Rafters: horizontal members connecting the top of the columns

Secondary members:

- longitudinal members running along the length of the building, connecting to the main frame
- cold formed "Z" and "C" shaped purlins and girts

Roof & Wall Cladding:

- the outside covering of the building

MAK delivers uncompromising quality in the growing market demand for PEB's, which are widely used around the world. The advantages of pre-engineered buildings (PEB) include:

- One source for the total building solution
- Guaranteed 6 – 8 weeks production time
- Lower cost due to efficient design and lighter structure
- Higher quality achieved due to controlled production environment
- Longer clear span options (without interior columns)
- Low maintenance requirements
- Quick turnkey construction
- Effectively zero construction waste
- Highly energy efficient and recyclable

MAK produces a wide range of steel buildings, including:

- Warehouses
- Showrooms
- Shopping centers
- Supermarkets
- Distribution centers
- Exhibition halls
- Factory buildings
- Aircraft hangars
- Cold storage
- Labor camps
- Parks and sports centers
- Office buildings
- Residential buildings
- Multi-story buildings

Other Steel Structures

The structural steel division at MAK has the capability and capacity to supply structural steel buildings for selected types of projects, including (but not limited to):

- Desalination plants
- Power plants
- Steel mills
- High rise buildings
- Bridge girders
- Office buildings
- Factory buildings
- Water towers
- Steel platforms





VISION

Our only far-sighted vision is to assist all our esteemed customers with the top-notch quality gathered products and services that aim to run in a longer term aspect. On the contrary, our strongest mission is the fullest satisfaction of our customers over which quality compromise is not a cup of tea for us. We render our services with a consistent quality for which quality compromising is not a Cup of Tea for us. Hence, we add Four Moon Passion in our services prominently by Leaps and Bounds. We assist people with a spirit of **“You Wish We Make”**

MISSION

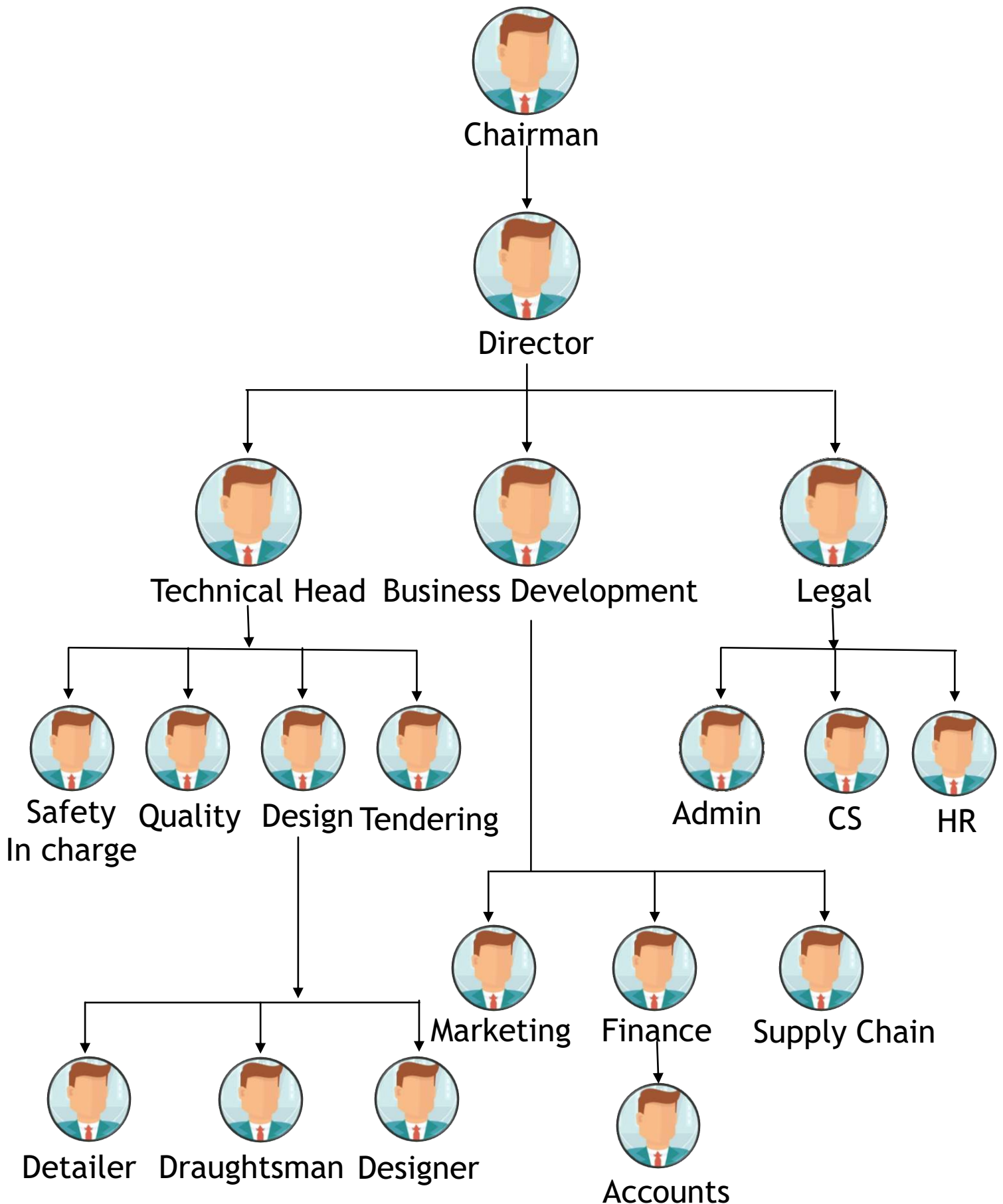
- To bring the PEB technology to where it is most needed in the world and provide others “build a better life” through industrialization.
- To build high capacity, efficient & cost effective steel structure for on time delivery and for benefitting clients.
- To design and fabricate safe and technologically advanced buildings.
- To offer customers versatility in design & fabrication to meet their exact building requirements.
- To offer excellent customer services.
- To generate the number of employment to boost the economy the country.



QUALITY WITH COST

- Be a leader and not a follower.
- Share knowledge and success with others.
- Forge local alliances wherever you go.
- Apply only the latest design and buildings codes.
- Continually improve your products.
- Customer service makes all the difference; customers are lifetime partners; always seek a win – win solution.
- The longest journey begins with the smallest step so begin with the end in mind and focus on the long term instead of short term.

Organisation Chart



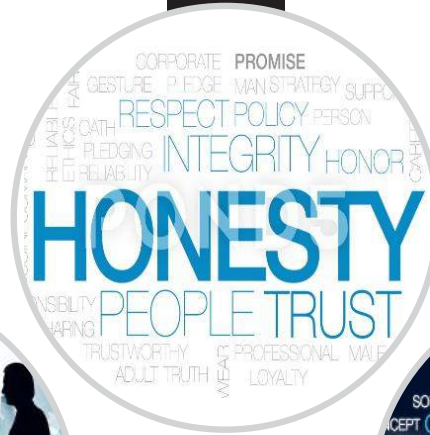
Commitment



Professionalism



Honesty



Collaborative



Client Focus

As a trusted advisors everything we do is valued by clients.

Quality

We are proud to stand behind the quality of work we deliver.

Integrity

We always act with integrity through, fairness and accountability.

Excellence

Delivering what we promise and exceeding expectations.

Safety

We act consciously every day to keep our self and our team safe.

Sustainability

We understand the bigger picture and add value to bottom line.

Our Community

We support the community in which operate.

Respect

We values everybody within and outside the organization for their contribution.

Our People

Culture

Performance

Fun

Passionate

Compliance

Innovation

Ethics

Communication Nurturing

CODES OF MANUFACTURING

The PEB structures are made according to certain pre-defined parameters. Those parameters or codes approved by the Manufacturing Associations & Governing industries.

MBMA (Metal Building Manufacturers Association):

The Metal Building Manufacturers Association was founded in 1956 and promotes the design and construction of metal building systems in the low-rise, non-residential building marketplace.



It provide codes for the use of structural steel fabrication and construction.



AISI (American Iron and Steel Institute):

It collects and disseminates statistics and information, carrying on investigations, providing a forum for the discussion of problems and advancing the interests of the industry.



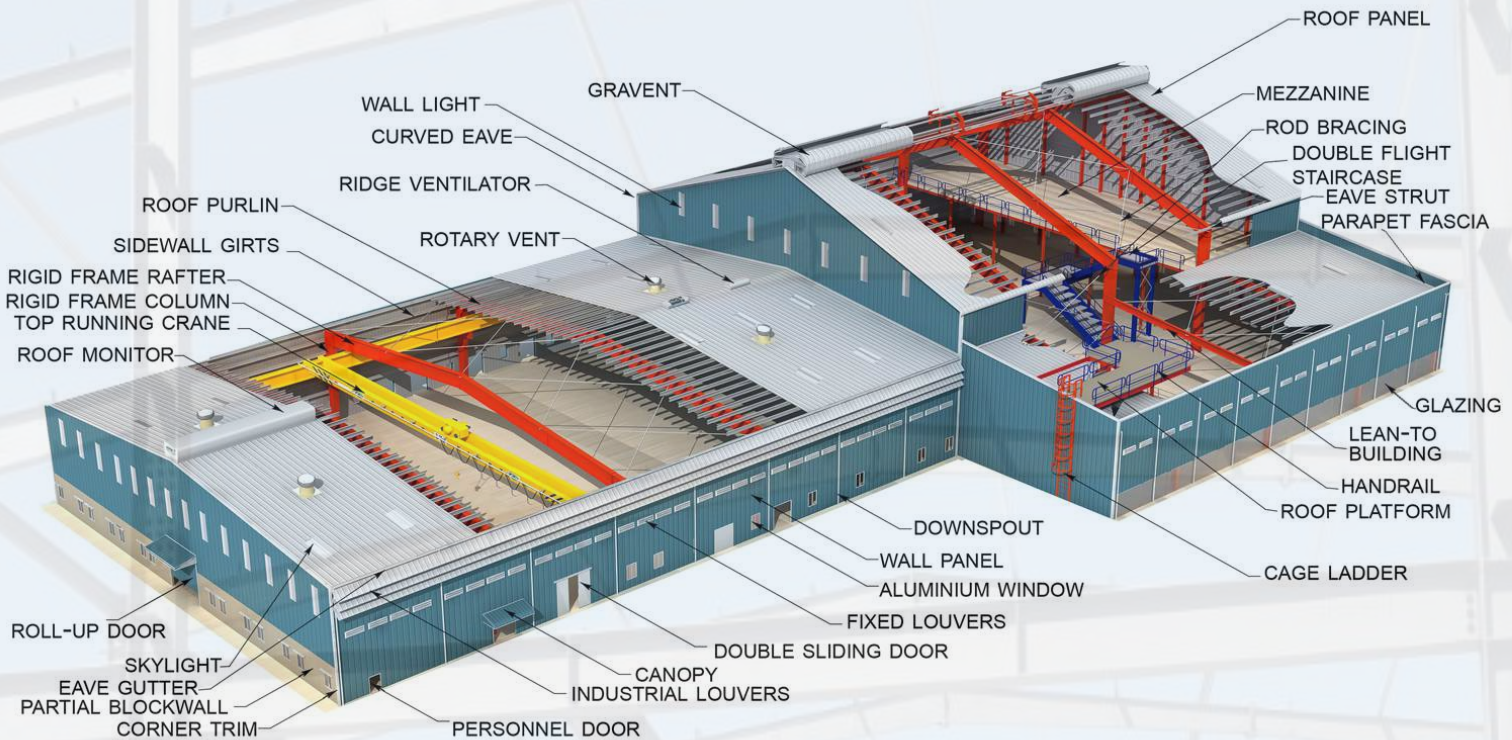
**American
Iron and Steel
Institute**

BIS (Bureau of Indian Standards):

The Bureau of Indian Standards is the national Standards Body of India working under the aegis of Ministry of Consumer Affairs, Food & Public Distribution, Government of India.



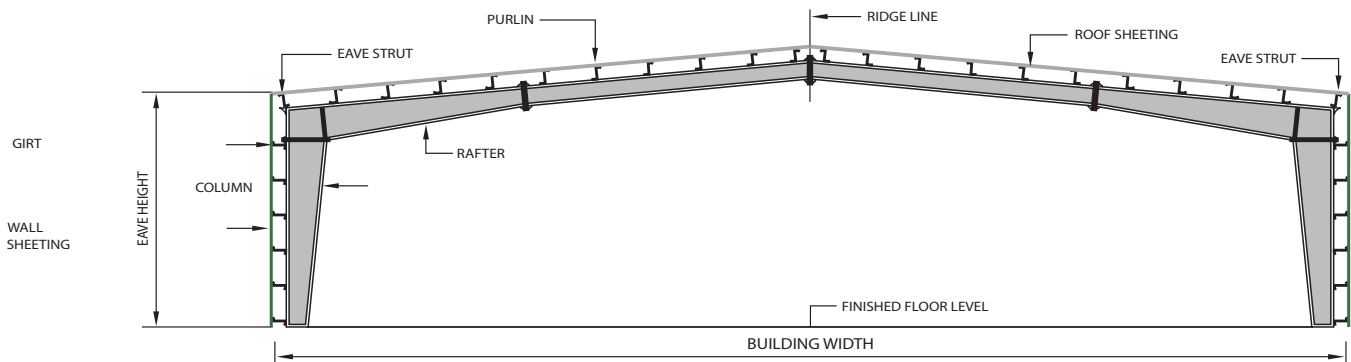
PRE - ENGINEERING BUILDING SPECIFICATION



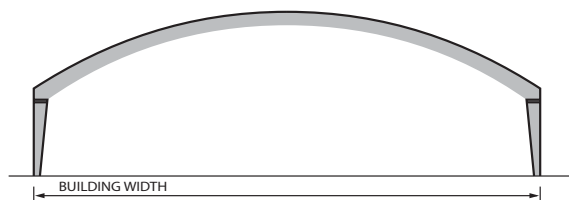
PRE - ENGINEERING BUILDING DETAILS

- **Primary Structural Members:-** Main Frame - Columns | End-wall Posts | Rafters (i) Solid Web (ii) Open Web | Other Main Support Members
- **Secondary Structural Members:-** Purlins & Girts | Eave Strut | Cable | Angle | Pipe | Builtup | Rod Bracing | Wide Bay Truss Purlins (Cold Formed / HR)
- **Roofing / Claddings:-** Pre-painted Galvalume (Alu-Zinc) Sheetting is a multilayer coated profile with environment specific paint coating and is available with or without insulation. PPGL panels are offered with wide range of coatings namely SMP, SDP, PVDF; commensurate with project location.
- **INTERLOCK (Standing Seam Roof - SSR):-** Leak-Proof | Zero Maintenance | Interlocking Panels | 3600 Mechanical Seam | 76 mm Deep Crest | Full Seamed Roof | Movable Clip | Factory Made SSR
- **Accessories:-** Fasteners | TUF - Dome Lite | Sliding Doors | Mastic Tape | Walk-way Doors | Insulation | Glazing Windows | Roof Curb | Fixed Ventilators | Roof Jack | Turbo Vents | Roll-up Doors | Ridge Vent Sealants.
- **Erection and Installation:-** From selection of appropriate structures to economic designs, we monitor and supervise the entire project till completion.
- **Industry Applications:-** Airports | Automobiles | Commercial Buildings | Engineering & Manufacturing | Food Processing | Infrastructure | Pharmaceuticals | Power | Retail | Textile | Warehousing & Logistics
- **Installation Tools:-** Hydra | Cranes | Scissor lift

STANDARD FRAMING SYSTEMS

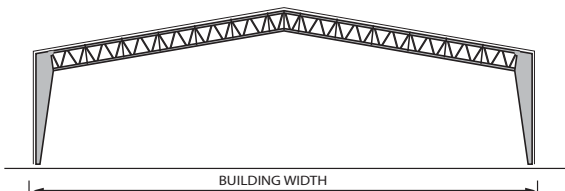


TYPICAL CROSS SECTION



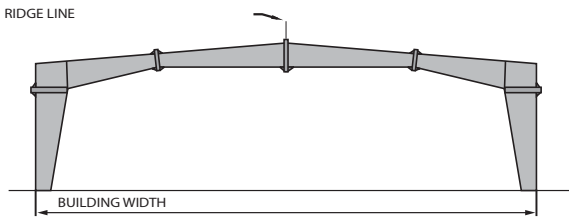
MAX. PRACTICAL WIDTH = 100 m

Built-up Curved Rafter (BU)



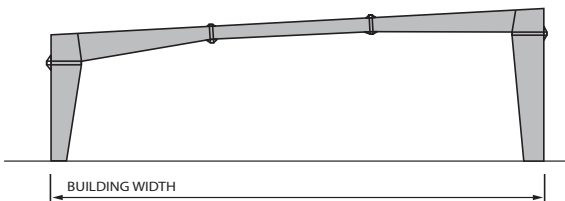
MAX. PRACTICAL WIDTH = 80 m

PebHybrid (PH)



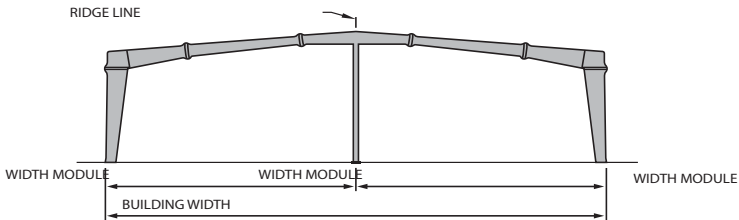
MAX. PRACTICAL WIDTH = 180 m

Clear Span (CS)



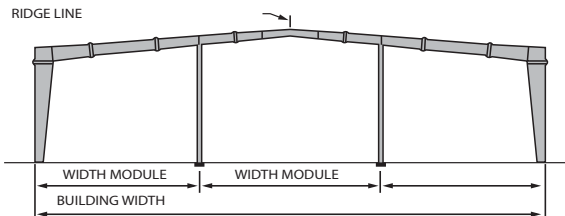
MAX. PRACTICAL WIDTH = 60 m

Single Slope (SS)



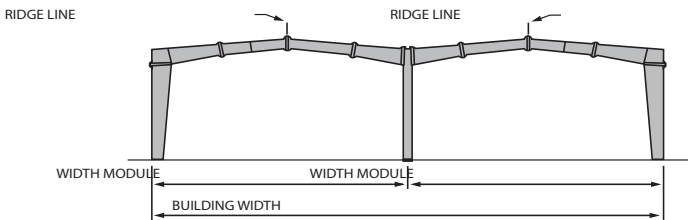
MAX. PRACTICAL WIDTH = 150 m

Multi-Span "1" (MS-1)



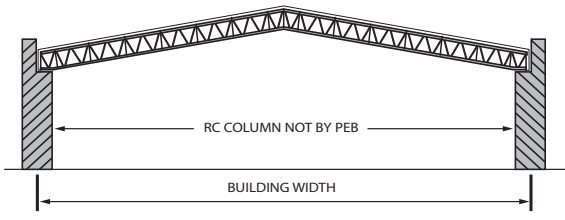
MAX. PRACTICAL WIDTH = 200 m

Multi-Span "2" (MS-2)



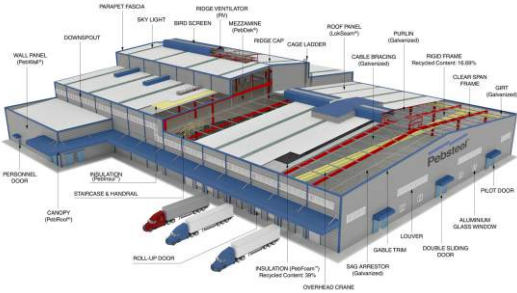
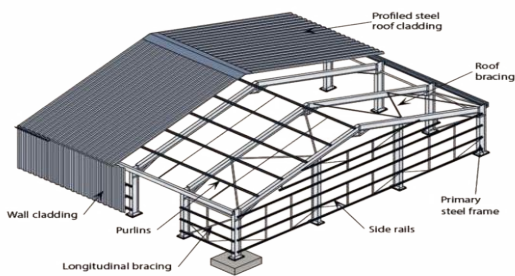
MAX. PRACTICAL WIDTH = 360 m

Multi-Gable (MG)

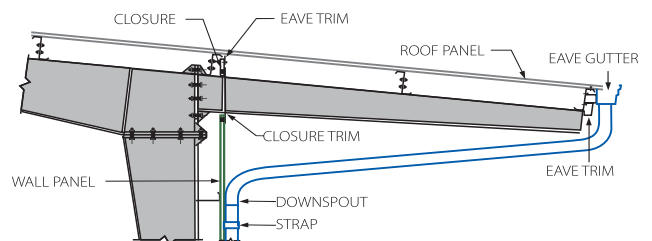
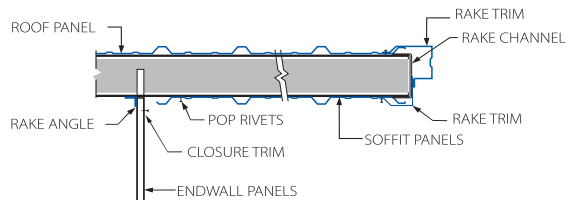
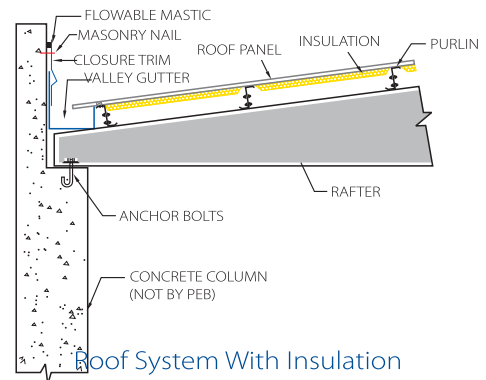
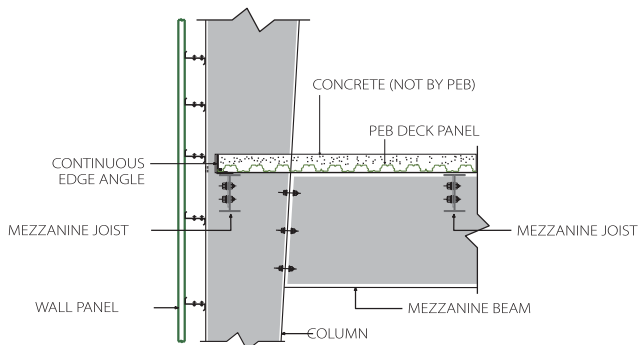
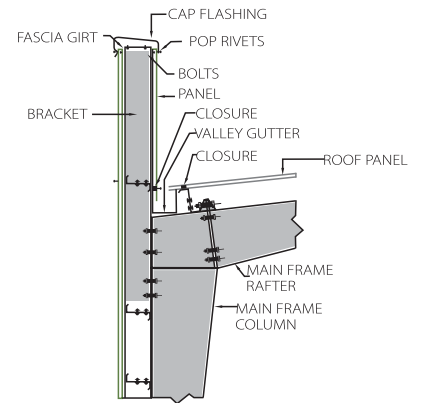
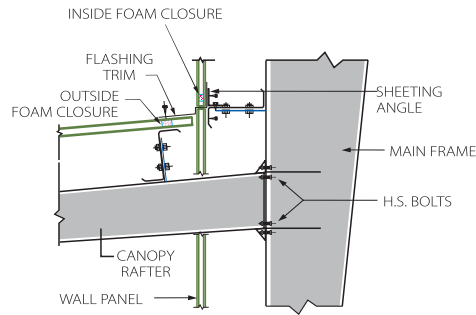
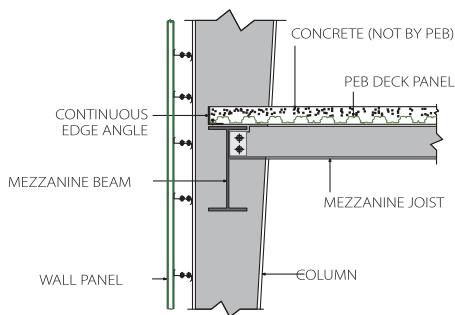
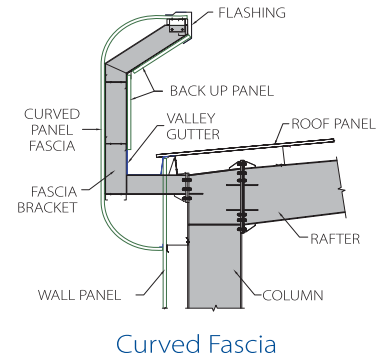
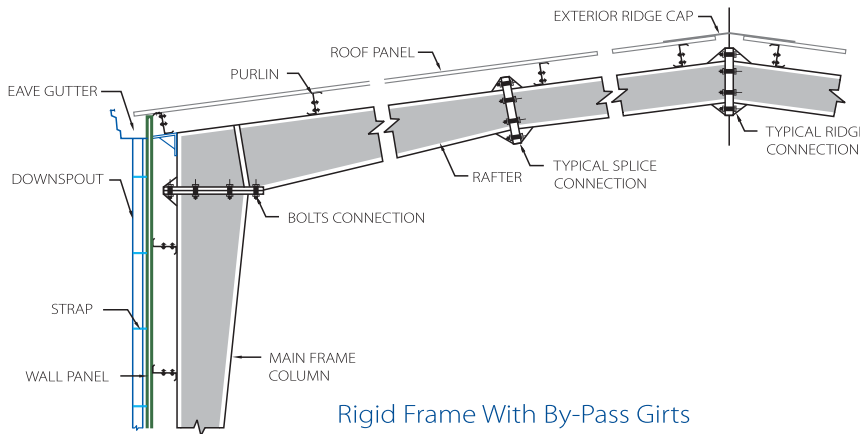


MAX. PRACTICAL WIDTH = 65 m

Roof System (RS)

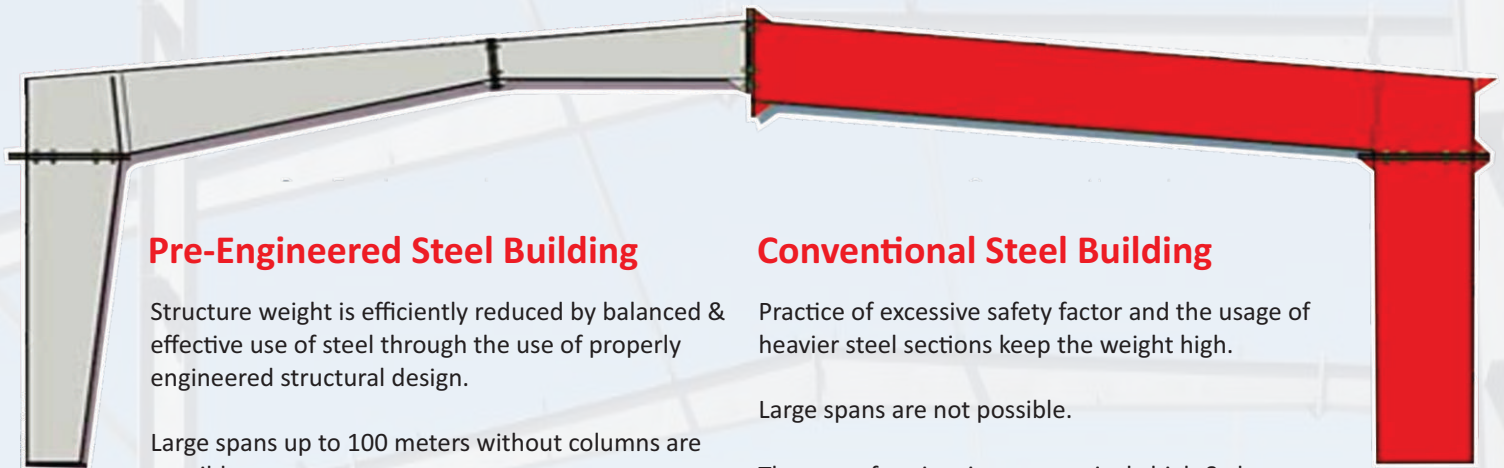


STANDARD STRUCTURAL DETAILS



COMPLETE STRUCTURE DESIGN





Pre-Engineered Steel Building

Structure weight is efficiently reduced by balanced & effective use of steel through the use of properly engineered structural design.

Large spans up to 100 meters without columns are possible.

Lower initial cost (Cost per Square meter is much lower as compared to conventional constructions) and can be erected much faster.

The aesthetic appearance of the pre engineered building is much better as compared to conventional buildings.

Conventional Steel Building

Practice of excessive safety factor and the usage of heavier steel sections keep the weight high.

Large spans are not possible.

The cost of project is comparatively high & the completion of construction take about more than double time as compared to pre engineered building.

Efforts to give aesthetic looks to the building may increase the building cost.

ADVANTAGES

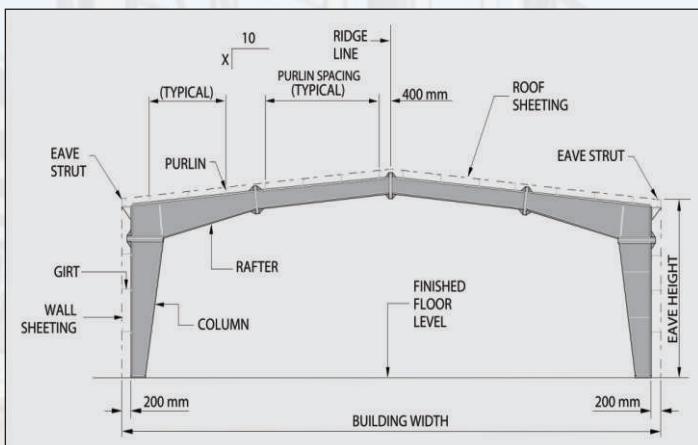
Single Source responsibility.

Flexibility in building dimensions with easy & fast modular expand ability.

Low initial cost & low maintenance.

Clear Spans upto 100m without internal columns.

Faster overall project completion by saving construction time.



Building Width: No matter what primary framing system is used, the building width is defined as the distance from outside of eave strut of one sidewall to outside of eave strut of the opposite sidewall.

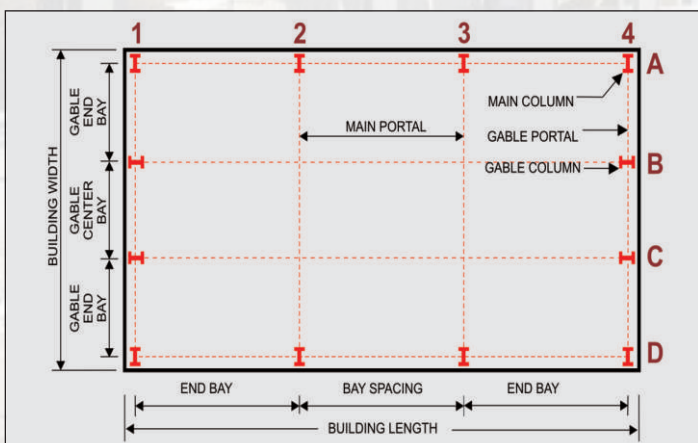
Building Length: The longitudinal length of the building measured from out to out of end wall steel lines.

Building Height: Building height is the eave height which usually is the distance from the bottom of the main frame column base plate to the top outer point of the eave strut. When columns are recessed or elevated from finished floor, eave height is the distance from finished floor level to top of eave strut.

Bay Spacing: The distance from outside of the outer flange of end wall columns to center line of the first interior frame column.

Roof Slope: This is the roof with respect to the horizontal. The most common roof slopes are 1/10. Any practical roof slope is possible.

Clear Height: This is the distance between the finished floor level to the bottom of knee joint





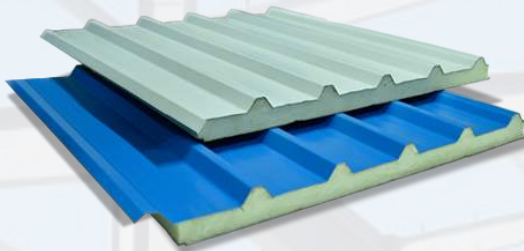
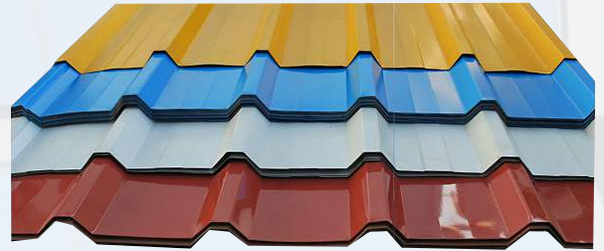
SAFETY

Workplace safety in a factory is an important component. MAK STEEL INDUSTRY eliminates all the hazards put in place policies meant to protect the workers. MAK STEEL INDUSTRY follow all the procedure to minimize the risk in factory by providing proper facilities, equipment, tools and other necessary accessories to workers. Below are some safety guidelines for the workers that they have to follow while working in MAK STEEL INDUSTRY.

1. All employees will wear all required safety gear, safety glasses, and safety clothing for their job/position while at their workstation.
2. All employees working around moving machinery are prohibited from wearing loose clothing or loose jewelry.
3. All employees working around moving machinery must have long hair tied back where it can not fall forward or be caught in the machinery.
4. All tools will be in use or will be stored at their proper location at all times, no tools are to be left in any location where they are not being used or being stored.
5. All equipment, tools and machinery are to be kept clean and in full working condition, with any defects being immediately reported to maintenance.
6. The instruction manuals for all machinery must be readily available for review.
7. All equipment and machinery is to be shut down when not in use. 8 No machinery is to be modi

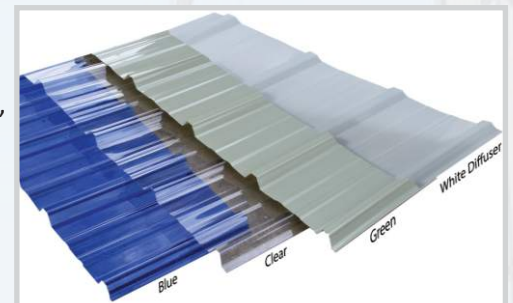
ROOFING & CLADDING PANELS

Galvalume Sheet: These color coated galvalume sheets are manufactured by cold-rolling technique. Thickness of the colors coated on the surface of these sheets depends on the specific requirements. We offer these sheets in various colors like dark grey, dark red bright red, brown, southern green, fern green, copper metallic, Blue, Off White, white etc.



Roof Sandwich Panel: Sandwich Panel is state-of-the-art Polyurethane, developed exclusively for the tropical climate. The key advantages of PUF (polyurethane) over conventional elastomers and plastics; it is stronger, tougher, more durable, and more versatile. It's valued above the parts made with other conventional materials which often crack, break, tear, swell, deteriorate, and abrade.

Skylight Sandwich Panels (Polycarbonate): For additional indirect lighting needs, translucent Skyhight reinforced panels created in the same configuration as metal wall or roof panels, provide an optimal solution.

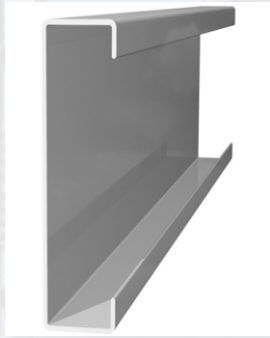


Wall Sandwich Panels: PUF slabs are the most economical thermal insulation rigid Polyurethane Foam Materials for various applications in building and all types of industries. PUF Slabs in various thicknesses for insulating the buildings or any kind of construction where the temperature and energy savings are more concern. The applications of these slabs are primarily in Cold Storages, Freezer Rooms and on a very large scale for insulating the roofs and Walls of the civil buildings. 'K' values of these materials are the lowest of all the Thermal Insulating materials. PUF slabs also available with craft paper or aluminum foil lamination. Broadly used on the ceiling to take in sound



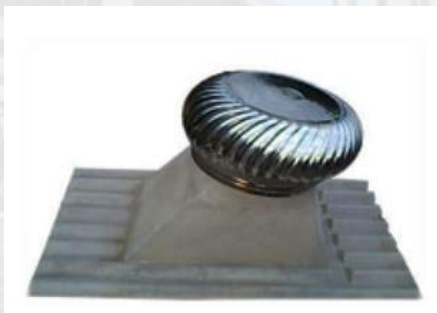
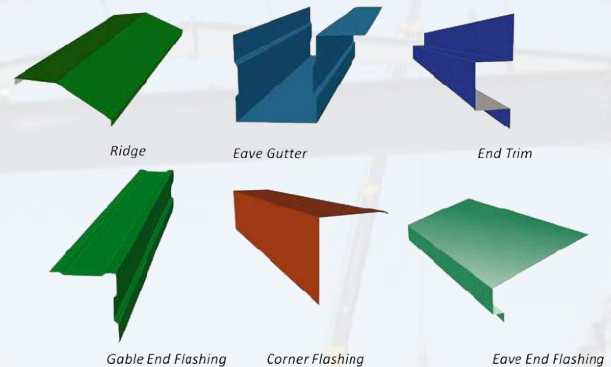
PURLINS & GIRTS

ZPURLINS: We offer an extensive range of standard steel Z-sections, which can be customized during the process e.g. fitted with a pre-punched hole pattern. We are also experts in developing custom made Z-sections. All products are cut from large steel coils and thus your Z-sections can be fully customized to your specifications: no matter the size, thickness, complexity, material specifications or finish



CPURLINS: C Purlins are horizontal structures that are used to support the load from the roof deck or the sheathing. The plane surface of this purlins on one side has made it a preferred material for cladding due to its easy installation on concrete structures or steel. Our range purlins are light in weight and perfect for simple span construction.

Accessories: Pre-Engineering building accessories are used for erection of roofing and cladding of steel structures. Made of durable steel which provide you matching to roof & wall cladding sheets.

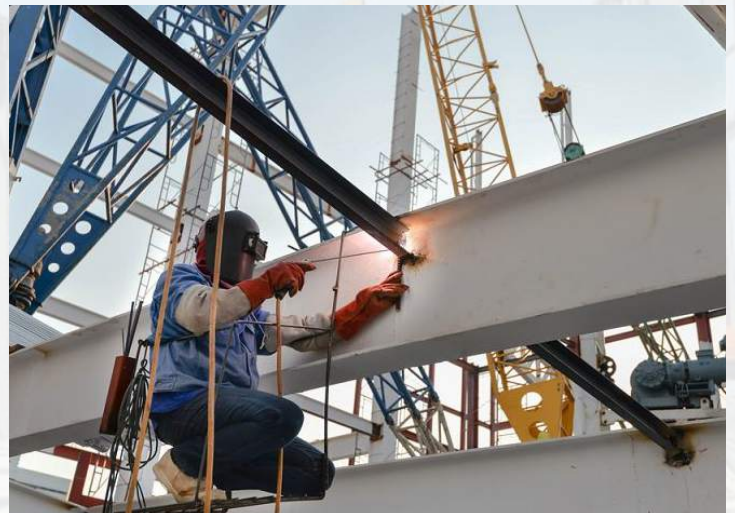
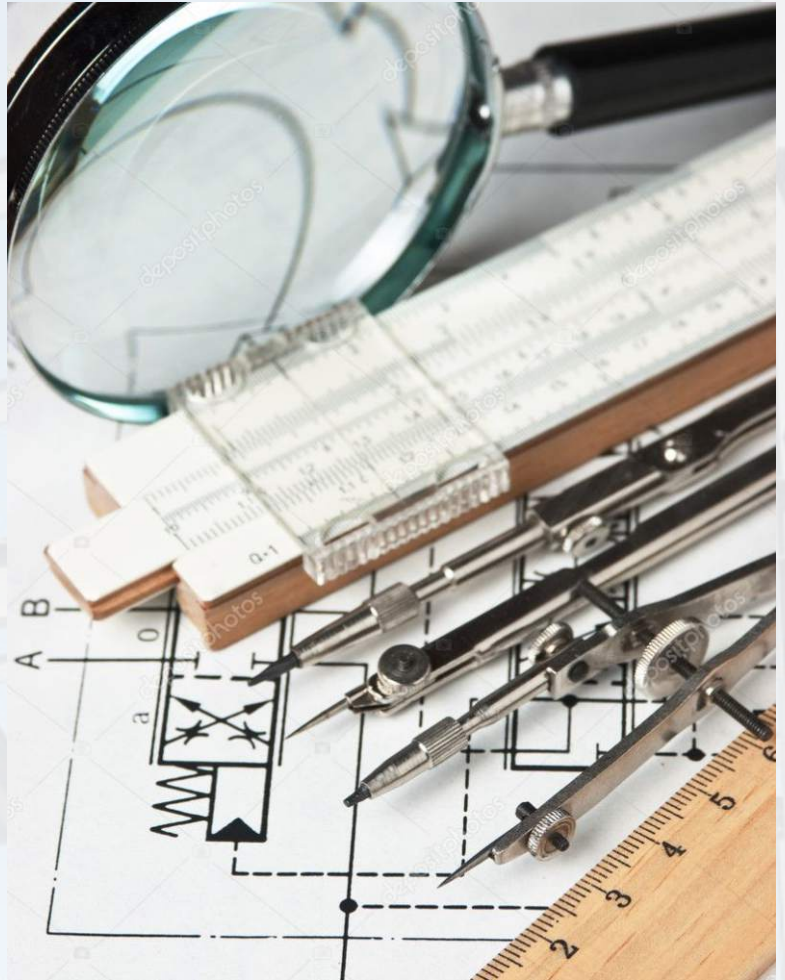


Roof Ventilators: The turbo ventilators are used in different industrial and commercial areas for their general smart ventilation features and attributes. For their efficient working, offered range is extensively demanded in the market amongst our customers. Offered ventilations systems are assured on diverse parameters of quality and as a result of which more and more customers move to use for their ventilation confined needs.

Anchor Bolts: An anchor bolt is used to attach objects or structures to concrete. There are many types of anchor bolts, consisting of designs that are mostly proprietary to the manufacturing companies. All consist of a threaded end, to which a nut and washer can be attached for the external load. Anchor bolts are extensively used on all types of projects, from standard buildings to dams and nuclear power plants. They can also be used to firmly affix embed plates to a concrete foundation when used with a structural steel element.



STRUCTURAL DESIGN & ENGINEERING



The construction of a PEB structure needs in-depth observation & analysis to design it with great precision. And the journey of the PEB structure starts from the making of Structure drawing. Here the structure design Engineers equippe with all the modern tools to design it according to all Indian & International Codes. While making such extensive things they always be focused on structure format, client need & most important time & cost

MAK STEEL INDUSTRY

The Machine used for fabrication of the structure & to shape the steel, must have to be very precise so that it gives desired output. Whether it's drilling, cutting, beveling, bending, punching etc , All must be according to the highest quality standards & should be extremely reliable with a variety of practical applications.



CNC PLAZMA MACHINE



H-BEAM/PTW



PLAZMA



GRINDING



MIG WELDING

MAX STEEL IN-HOUSE MACHINES



Crimping Sheet Machine



C&Z Purlins Machine



Sheet Foaming Machine



Power press machine



Flashing bending Machine



Bending Machine

MACHINERIES AND EQUIPMENTS

We all aware with how technology makes our living more convenient & comfort. Same applied also on steel industry. Our up to date machineries with all required tools monitored for quality and faults and also technological improvement over the years has contributed immensely to the enhancement of quality of life through various new products and services.



MEN LIFT



HYDRA



FORMING MACHINE



CHASER MACHINE FOR SAG ROD



**WE NOT ONLY
CONSTRUCT,
WE DESIGN IT.**

Established in 2013, MAK STEEL INDUSTRY with vast experience of over 10 years is today one of the leading metal building products manufacturer and integrated structural steel construction solutions provider in India.

MAK STEEL INDUSTRY offers the assurance of being a reputed home-grown Indian company with an excellent track record, strong financial background and a nationwide network of distributors and builders assuring local professional support with expertise in

- ◆ **Design & Engineering**
- ◆ **Manufacturing & Supply of Building**
- ◆ **Timely Project Delivery & Execution**

MAK STEEL INDUSTRY has a long history of executing some of the largest steel buildings in India. With capability of designing and detailing very complex steel buildings. We have production plants to produce these and Project Management capabilities to erect them at site.

MAK Capabilities

- 2 manufacturing Units with modern equipments
- Quality check at every step of manufacturing to ensure best product quality
- Automated Machines & Processing of Buildings
- Experience & dedicated team to work precisely



PRE ENGINEERING BUILDINGS



Pre Fabricated Building



Pre Fabricated Warehouse



Pre Fabricated Structure



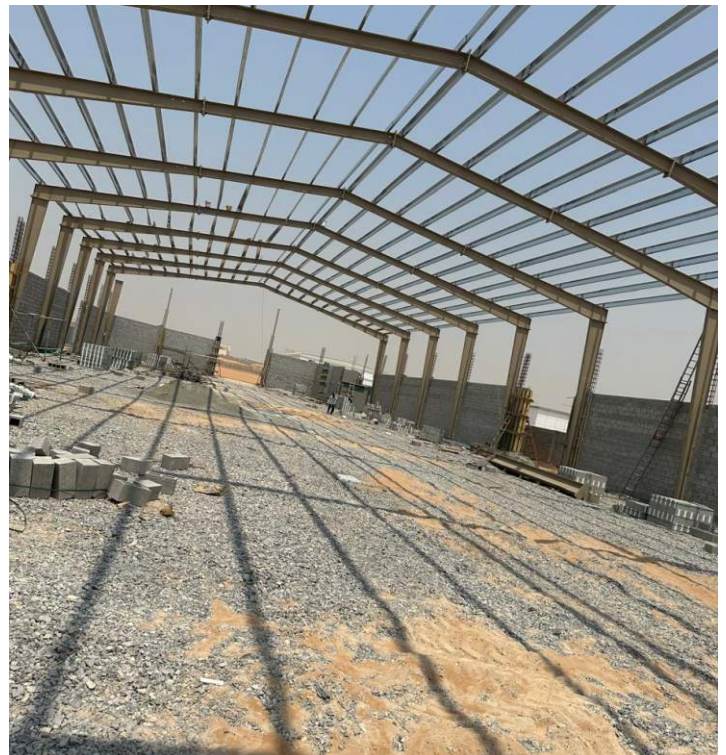
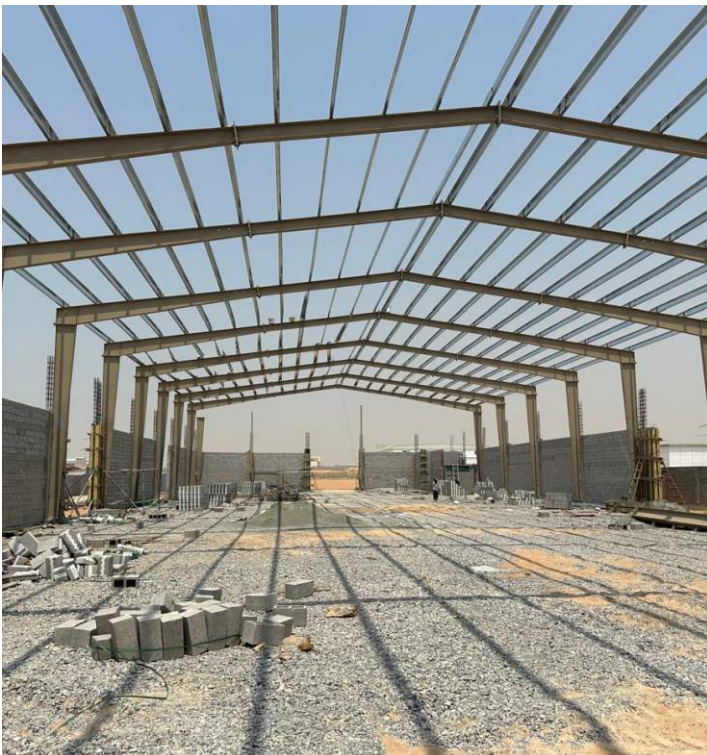
Prefabricated Industrial Structure



PRE ENGINEERED STRUCTURE

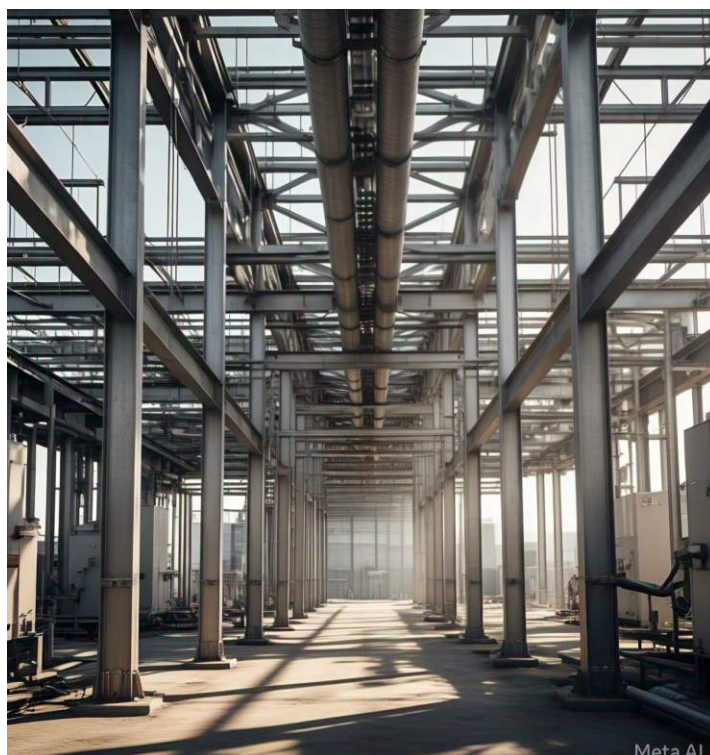
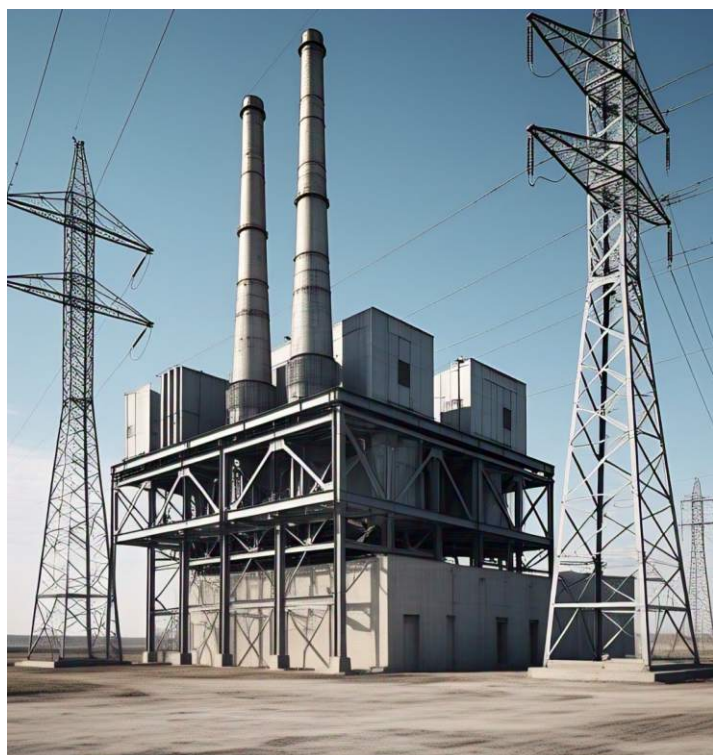
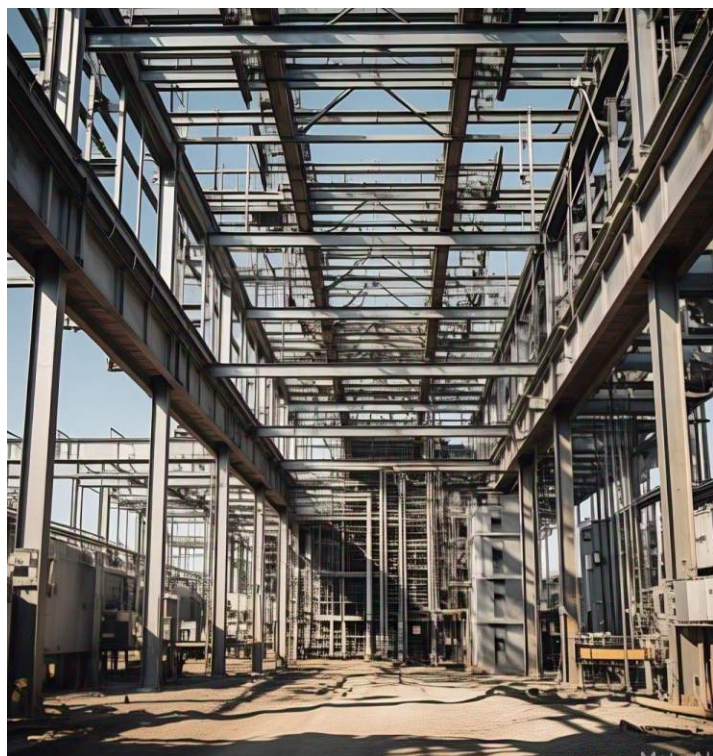
MAK PROJECTS

ABI BUILDING CONTRACTING LLC



MAK PROJECTS

EPYTECK POWER GENERATION LLC



MAK PROJECTS

KAHRAGEN ENGINEERING FZCO



MAK PROJECTS

AL FOOZ AL QADEM SHIPPING LLC.



NEAR EAST SUPPLIES



MAK PROJECTS

RAMPAL BABA WAREHOUSE



PEBAZONE



MAK PROJECTS

LLOYED ENERGY LIMITED



OM SHREE ENTERPRISES



MAK PROJECTS

RELIANCE INDUSTRIES LTD.



RELIANCE INDUSTRIES LTD.



MAK PROJECTS

K C CREATIVE GARMENTS PVT. LTD.



TRINITY ENTERPRISE



MAK PROJECTS

BHAVIK TERRYFAB LTD.



RAMPUR ENGINEERING



MAK PROJECTS

ARDEE INDUSTRIES PVT LTD.



GURU NANAK ENTERPRISES



MAK PROJECTS

GNEXT BUILDCON PVT. LTD.



NORISYS TECHNOLOGY LTD.



MAK PROJECTS

RAMPAL BABA ASHRAM



RAMPAL BABA ASHRAM



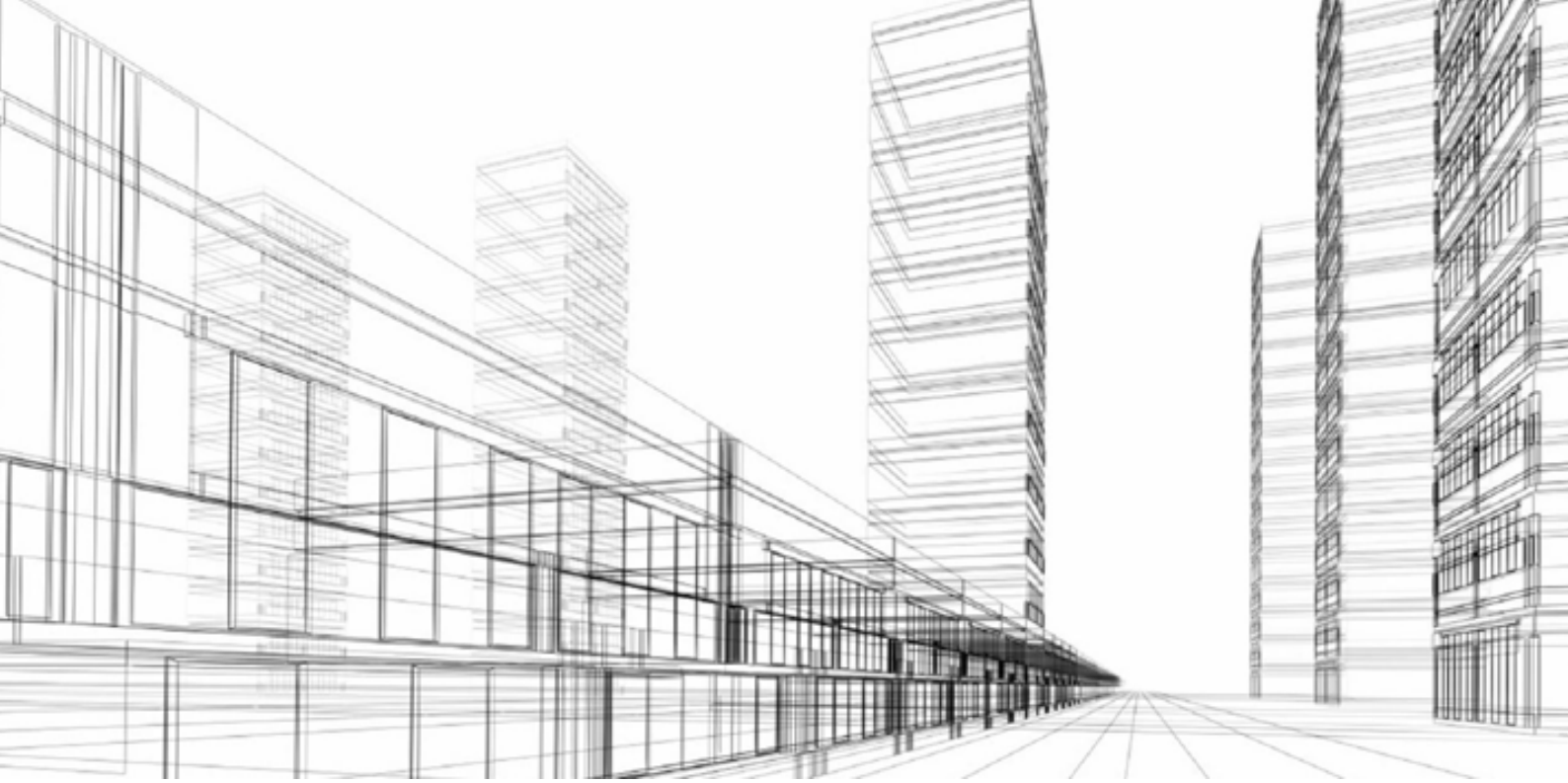
MAK PROJECTS

RAHI ENTERPRISES



MAX HOSPITAL





THERE'S A REASON WHY? **MAK STEEL INDUSTRY**

- Leading Service Provider In This Sector
- Experience of 15 Years
- Experienced & Dedicated Team.
- Object Oriented Work Flow.
- Always Focused On Time Boundation.
- Always Delivered Quality Products.
- Regular Co-ordination Throughout The Project.
- Priority To Client Satisfaction.
- Value For Money.
- Economical & Durable Suggestion.
- Loyalty On Which You Can Rely.
- Not Only Construct, We Design It.

Manufacturing Plant
Umm al quwain (UAQ) UAE



THINK PEB

THINK MAK STEEL INDUSTRY

One Stop Pre Engineering Building Solution

MAK STEEL INDUSTRY

(MAK Group of Company)

Corporate Office: 1152, Tamani Arts Building, Business Bay - Dubai - UAE
Factory Add: Plot No. 0863, Umm Derra, Industrial Area, Umm Al Qwain, UAE

Tel: +971-585234646, 0585701646

E-mail : makbuildingsystem@gmail.com | Info@makbuildings.com, www.makbuildings.com

AN ISO 9001 : 2015 CERTIFIED COMPANY